

AXIS M11-L Network Camera Series

Compact and affordable high-resolution cameras for professional surveillance



- > Day & Night functionality
- > Built-in IR LEDs
- > Edge storage
- > H.264 and Motion JPEG
- > Power over Ethernet
- > I/O support

AXIS M11-L Network Cameras offer small and compact professional fixed cameras for day and night surveillance. These cameras are ideal for small video surveillance systems such as boutiques, restaurants, hotels and offices.

AXIS M11-L Network Cameras include two HDTV models providing 720p and 1080p video at full frame rate. The cameras offer excellent image quality with progressive scan, providing crisp and clear images of moving objects. With their slim and compact design, the cameras enable quick and easy installation, for any indoor applications where surveillance is required round-the-clock.

Multiple H.264 streams, as well as Motion JPEG streams, can be provided at full frame rate, or each stream can be individually optimized for different quality requirements and bandwidth constraints.

AXIS M11-L Network Cameras offer built-in IR-LED illumination for optimal day and night surveillance. The illumination can be adjusted to match a selected viewing angle and illuminates automatically in darkness, at an event or when requested.

Power over Ethernet supplies power to the camera via the network, eliminating the need for power cables and reducing installation costs. The cameras also include a built-in memory card slot for edge storage.



Affordable cameras with discreet built-in IR-LED illumination for optimal day and night surveillance.

AXIS M11-L Network Cameras are specially designed for easy and discreet surveillance, making them ideal for a wide range of professional applications.

Flexible day and night surveillance with OptimizedIR

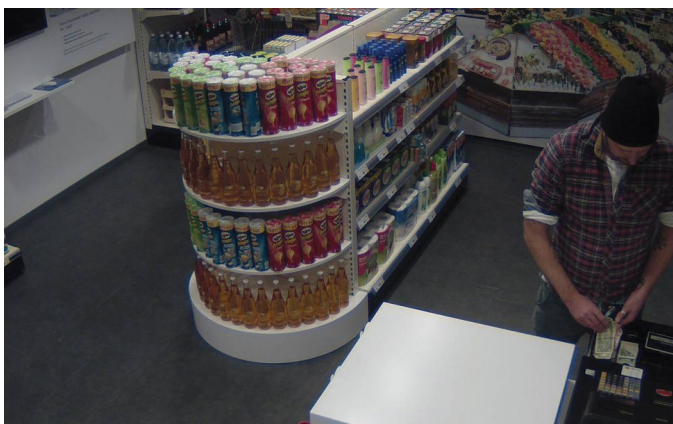
AXIS M11-L Series provides day and night varifocal multi-in lens and adjustable IR LED illumination for optimal light in selected viewing angles. With Axis OptimizedIR, a power-efficient LED technology that provides an adaptable angle of IR illumination and discreet integration of IR LEDs, the cameras provide automatic illumination of a scene in complete darkness, at an event or when requested by a user. The IR LED illumination which is invisible to the human eye, is perfect for discovering objects in a range of up to 15 meters (50 ft)



As light diminishes below a certain level, the cameras can automatically switch to night mode to deliver quality images in dark environments.

Slim and compact design for easy installation

AXIS M11-L Network Cameras enable quick and easy installation, simple setup and a trouble-free round-the-clock surveillance solution. With their slim and compact design, these cameras are perfectly suited for professional surveillance in boutiques, restaurants, hotels and offices. The M1145-L model also offers remote zoom and focus that eliminates the need for hands-on fine tuning and ensures that the camera's angle of view is optimized for the area to be monitored.



Power over Ethernet

The cameras are powered with Power over Ethernet (PoE, IEEE 802.3af standard) using a PoE-enabled switch or midspan over the same standard cable that transmits video. PoE provides multiple benefits, including reduced installation costs and flexibility in camera placement. In addition, the cameras can get centralized backup power which will ensure that the cameras will continue to operate even in the event of a power failure.

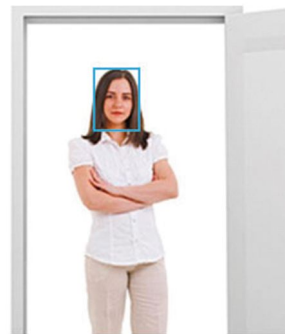
Reliable video surveillance systems

AXIS M11-L offer support for edge storage that enables recording video directly to a storage device such as a microSD/microSDHC card, thereby creating a more robust, reliable and flexible video surveillance system. The cameras can record video locally when the central system is not available, or continuously record in parallel. Missing video clips are later retrieved and merged with the central storage, thereby ensuring seamless, uninterrupted video recordings.

Axis Corridor Format

The unique Axis Corridor Format allows getting a vertically oriented, "portrait"-shaped video stream from the camera. The video is adapted perfectly to the monitored area, maximizing image quality while eliminating bandwidth and storage waste.

Unique pixel counter feature



The pixel counter offered in AXIS M11-L cameras allows the installer to easily verify that the camera installation fulfills any regulatory or specific customer requirements, for example, calculating the pixel resolution of the face of a person passing a doorway monitored by the camera.

P-Iris control

AXIS M1145-L features the advanced precise iris control for optimal depth of field, resolution, image contrast and clarity. Good depth of field implies that objects at different distances from the camera are in focus simultaneously. For more on P-Iris and iris control, go to: http://www.axis.com/corporate/corp/tech_papers.htm

Model Specifications – AXIS M11 Network Camera Series

	Resolution	CS mount	DC iris	P Iris	Edge storage	Day and night	IR LEDs	I/O	Remote Zoom & Focus
AXIS M1103	SVGA	✓							
AXIS M1104	1 MP/720p	✓							
AXIS M1113	SVGA	✓	✓						
AXIS M1113-E	SVGA	✓	✓						
AXIS M1114	1 MP/720p	✓	✓						
AXIS M1114-E	1 MP/720p	✓	✓						
AXIS M1144-L	1 MP/720p		✓		✓	✓	✓	✓	
AXIS M1145	2 MP/1080p			✓	✓	✓		✓	✓
AXIS M1145-L	2 MP/1080p			✓	✓	✓	✓	✓	✓

For more details, see datasheet for AXIS M11 Network Camera Series.

Dimensions

1. Right side view
2. Rear view

The technical drawings show the following dimensions:

- Right side view (1):** The camera body is 115 mm (4.5 in) wide and 46 mm (1.8 in) high. The mounting arm is 141 mm (5.6 in) long.
- Rear view (2):** The camera body is 75 mm (3.0 in) wide. The mounting arm is 95.5 mm (3.8 in) long. The base diameter is Ø80 mm (3.2 in).

Accessories

1. AXIS T8414 Installation Display
2. AXIS PoE products
3. AXIS P8221 I/O Audio Module
4. Scan for a complete list of accessories: www.axis.com/products/cam_acc/

The accessories shown are:

- AXIS T8414 Installation Display: A handheld device with a screen and navigation buttons.
- AXIS PoE products: A collection of network switches and injectors.
- AXIS P8221 I/O Audio Module: A small, rectangular module with ports.
- QR code: A square code for more information.

Technical Specifications - AXIS M11-L Network Camera Series

Models	AXIS M1144-L: Varifocal, DC-iris lens: 1 MP/HDTV 720p, IR illumination AXIS M1145-L: Varifocal, P-Iris lens: 2 MP/HDTV 1080p, OptimizedIR	System integration	Application Programming Interface Open API for software integration, including VAPIX® and AXIS Camera Application Platform, specifications available at www.axis.com AXIS Video Hosting System (AVHS) with One-Click Camera Connection ONVIF Profile S, specification at www.onvif.org
Camera		Intelligent video	Video motion detection, Active tampering alarm
Image sensor	AXIS M1144-L: Progressive scan RGB CMOS 1/4" AXIS M1145-L: Progressive scan RGB CMOS 1/2.9"	Event triggers	Intelligent video, Edge storage events, External input, Time scheduled
Lens	AXIS M1144-L: Varifocal 2.5-6 mm: 87°-40° view ^a , F1.4 AXIS M1145-L: Varifocal, P-Iris 3-10.5 mm: 95°-34° view ^a , F1.4 with built-in IR-cut filter and motorized focus/zoom	Event actions	File upload via FTP, HTTP and network share and email Notification via email, HTTP and TCP, Pre- and post-alarm video buffering, External output activation, Video recording to edge storage, Go to PTZ preset, Guard tour, Activation of IR illumination
Day and night	Automatically removable infrared-cut filter	Data streaming	Event data
Minimum illumination	0 lux with IR illumination on AXIS M1144-L: Color: 0.6 lux, F1.4, B/W: 0.08 lux, F1.4 AXIS M1145-L: Color: 0.4 lux, F1.4, B/W: 0.08 lux, F1.4	General	
Shutter time	AXIS M1144-L: Power line frequency 50 Hz: 1/8000 s to 1/6 s Power line frequency 60 Hz: 1/8000 s to 1/6 s AXIS M1145-L: Power line frequency 50 Hz: 1/28000 s to 2 s Power line frequency 60 Hz: 1/33500 s to 2 s	Casing	Color: White NCS S 1002-B AXIS M1144-L: Aluminium and PC/ABS AXIS M1145-L: Aluminium and PC/Siloxane
Pan/Tilt/Zoom	Digital PTZ	Memory	256 MB RAM, 128 MB Flash
Video		Power	AXIS M1144-L: Power over Ethernet IEEE 802.3af Class 2, max. 5.9 W PoE enabled switch or midspan required (not included) AXIS M1145-L: Power over Ethernet IEEE 802.3af/802.3at Type 1 Class 3, Max. 10.5 W
Video compression	AXIS M1144-L: H.264 Main Profile (MPEG-4 Part 10/AVC), Motion JPEG AXIS M1145-L: H.264 Main and Baseline Profile (MPEG-4 Part 10/AVC), Motion JPEG	Connectors	RJ45 10BASE-T/100BASE-TX 1 alarm input and 1 output
Resolutions	AXIS M1144-L: 1280x800 to 352x240 AXIS M1145-L: 1920x1080 to 352x240	IR illumination	Optimized IR, highly efficient LEDs with adjustable intensity and angle of illumination. Range up to 15 m (50 ft).
Frame rate	H.264: 30 fps in all resolutions Motion JPEG: 30 fps in all resolutions AXIS M1145-L: 25/30 fps with power line frequency 50/60 Hz	Edge storage	microSD/microSDHC/microSDXC slot supporting memory card up to 64 GB (card not included) Support for recording to network-share (network-attached storage or file server)
Video streaming	Multiple, individually configurable streams in H.264 and Motion JPEG Controllable frame rate and bandwidth VBR/CBR H.264	Operating conditions	0 °C to 40 °C (32 °F to 122 °F) Humidity 20-80% RH (non-condensing)
Image settings	Compression, Color, Brightness, Sharpness, Contrast, Whitebalance, Backlightcompensation, Mirroring of images, Rotation – including Corridor Format, Text and imageoverlay, Privacy mask Rotation: 0°, 90°, 180°, 270° AXIS M1145-L: Wide Dynamic Range - Dynamic Contrast, Exposure control, Exposure zones, Fine tuning of behavior at low light	Approvals	EN 55022 Class B, EN 61000-6-1, EN 61000-6-2, EN 61000-3-2, EN 61000-3-3, EN 55024, FCC Part 15 Subpart B Class B, ICES-003 Class B, VCCI Class B, C-tick AS/NZS CISPR 22 Class B, KCC KN22 Class B, KN24, IEC/EN/UL 60950-1, IEC/EN 62471 AXIS M1145-L: EN 50581
Network		Weight	AXIS M1144-L: 250 g (0.55 lb) AXIS M1145-L: 260 g (0.57 lb)
Security	Password protection, IP address filtering, IEEE 802.1X ^b network access control, HTTPS ^b encryption, digest authentication, user access log	Included accessories	Stand, Installation Guide, Installation and Management Software CD, Windows decoder 1-user license AXIS M1144-L: Lever tool
Supported protocols	IPv4/v6, HTTP, HTTPS ^b , SSL/TLS ^b , QoS Layer 3 DiffServ, FTP, CIFS/SMB, SMTP, Bonjour, UPnP TM , SNMPv1/v2c/v3 (MIB-II), DNS, DynDNS, NTP, RTSP, RTP, TCP, UDP, IGMP, RTCP, ICMP, DHCP, ARP, SOCKS	Video management software	AXIS Camera Companion (included), AXIS Camera Station and video management software from Axis' Application Development Partners (not included). For more information, see www.axis.com/products/video/software
		Warranty	Axis 1-year warranty and AXIS Extended Warranty option, see www.axis.com/warranty

- a. Horizontal Angle of View
b. This product includes software developed by the OpenSSL Project for use in the OpenSSL Toolkit (<http://www.openssl.org/>), and cryptographic software written by Eric Young (ey@cryptsoft.com).

More information is available at www.axis.com