

AXIS M30 Network Camera Series - Outdoor models

Outdoor-ready, fixed mini-domes with HDTV and 360°/180° panoramic views



- > Compact, vandal-resistant, outdoor-ready design
- > Wide-angle and 360°/180° panoramic views
- > HDTV/multi-megapixel video
- > Built-in IR illumination
- > Day/Night functionality
- > Input/output ports for external devices

AXIS M30-VE Network Cameras, which are part of the AXIS M30 Series, are affordably priced, vandal-resistant fixed mini domes for excellent video during day and night-time conditions in indoor or outdoor environments. The series offers HDTV performance and 360°/180° panoramic views and is ideal for installation inside or outside a hotel, boutique, restaurant, office or school.

AXIS M3024-LVE provides 1-megapixel and HDTV 720p video and offers built-in IR illumination for surveillance even in complete darkness. AXIS M3025-VE supports 2-megapixel resolution in full HDTV 1080p, whereas AXIS M3026-VE additionally provides 3-megapixel resolution and can stream different view areas within its field of view. AXIS M3027-PVE is a 5-megapixel fixed dome that provides a 360° view when mounted on a ceiling or soffit, and a 180° view when wall mounted.

AXIS M30-VE cameras are outdoor ready and impact resistant, with IP66, NEMA 4X and IK10 ratings. The cameras come focused at delivery and can be mounted on walls, ceilings or pendants. AXIS M3024-LVE, AXIS M3025-VE and AXIS M3026-VE have a 3-axis camera angle adjustment for flexible installation. They

also support Axis Corridor Format for vertically oriented video streams that maximize coverage of areas along walls or aisles.

AXIS M30-VE cameras have input/output ports for connection to external devices. The cameras support AXIS Camera Application Platform for intelligent video applications, AXIS M3026-VE and AXIS M3027-PVE have substantial capacity for video analytics.

The fixed domes offer a convenient video management solution with their built-in memory card slot for edge storage and support for software such as the complimentary AXIS Camera Companion.

The cameras come with a 2 m (6.6 ft) network cable and are powered using Power over Ethernet (IEEE 802.3af).



HDTV
NETWORK VIDEO



Compact and affordable day/night fixed domes

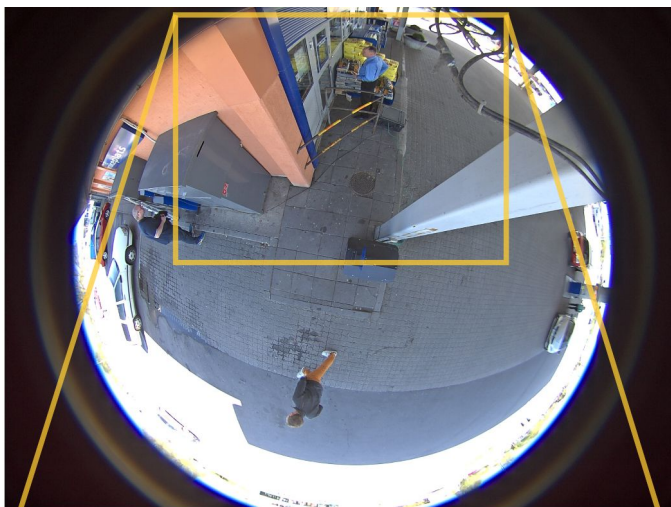
HDTV and multi-megapixel models

AXIS M30-VE cameras – with different viewing angle, resolution, frame rate and intelligent video capacity – have been optimized to provide best in class performance for the different application needs of price-sensitive customers.

360°/180° panoramic views

AXIS M3027-PVE is a 360°/180° fixed dome that can be used to help detect activities, track the flow of people and improve area management.

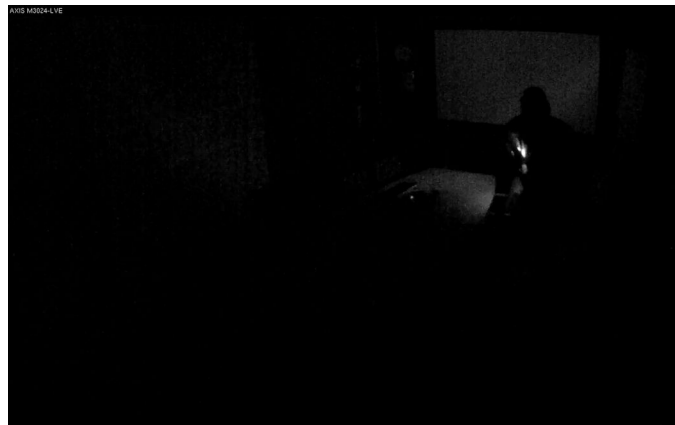
AXIS M3027-PVE supports several viewing modes: 360° overview and dewarped views such as panorama, double panorama and quad views. The camera also provides view area modes where users can digitally pan, tilt and zoom in on areas of interest.



Top: 360° overview area
Below: Dewarped view area

Day/night functionality and IR illumination

The day/night functionality in AXIS M30-VE cameras is useful for surveillance in indoor or outdoor environments with changing lighting conditions. The day/night functionality involves an automatically removable infrared-cut filter in the cameras. The filter is on during daytime or bright conditions, enabling the cameras to produce colors as the human eye sees them. In nighttime or low-light conditions, the filter is removed to enable the cameras to take advantage of invisible near-infrared light. This functionality allows the cameras to extend their usefulness in low-light conditions and enables IR (infrared) illuminators to be used to further improve video quality in dark environments. AXIS M3024-LVE has built-in IR illuminators and is ideal for surveillance in complete darkness. AXIS M3024-LVE uses high-efficiency, long-life 850 nm IR LEDs.



The above images from AXIS M3024-LVE – depicting the same scenario of a man with a small flashlight in a dark room – show the difference that IR illumination makes for surveillance in the dark. IR light is invisible to the human eye but visible to the camera.

Top: Without IR illumination
Below: With IR illumination

Technical Specifications - AXIS M30 Series - Outdoor models

Models	AXIS M3024-LVE: 1 MP / HDTV 720p, IR illumination AXIS M3025-VE: 2 MP / HDTV 1080p AXIS M3026-VE: 3 MP / HDTV 1080p AXIS M3027-PVE: 5 MP, 360°/180°	Supported protocols	IPv4/v6, HTTP, HTTPS ^b , SSL/TLS ^b , QoS Layer 3 DiffServ, FTP, CIFS/SMB, SMTP, Bonjour, UPnP, SNMPv1/v2c/v3 (MIB-II), DNS, DynDNS, NTP, RTSP, RTP, TCP, UDP, IGMP, RTCP, ICMP, DHCP, ARP, SOCKS, SSH
Camera		System integration	
Image sensor	AXIS M3024-LVE: 1/4" progressive scan RGB CMOS AXIS M3025-VE: 1/2.7" progressive scan RGB CMOS AXIS M3026-VE: 1/3.6" (effective) progressive scan RGB CMOS AXIS M3027-PVE: 1/3.2" progressive scan RGB CMOS	Application Programming Interface	Open API for software integration, including VAPIX® and AXIS Camera Application Platform, specifications at www.axis.com AXIS Video Hosting System (AVHS) with One-Click Camera Connection ONVIF Profile S, specification at www.onvif.org
Lens	M12 mount, Fixed iris, Megapixel resolution, IR corrected AXIS M3024-LVE: 2.8 mm, 77° view ^a , F2.0 AXIS M3025-VE: 3.6 mm, 91° view ^a , F2.0 AXIS M3026-VE: 2.0 mm, 106° view ^a , F2.0 AXIS M3027-PVE: 2.8 mm, 187° view ^a , F2.0	Intelligent video	Video motion detection, Active tampering alarm, AXIS Camera Application Platform enabling installation of additional applications
Day and night	Automatically removable infrared-cut filter	Event triggers	Intelligent video, Edge storage events, External input
Light sensitivity/minimum illumination	AXIS M3024-LVE: Color: 0.8–100000 lux, F2.0, B/W: 0.16 lux, F2.0, 0 lux with IR illumination on AXIS M3025-VE: Color: 0.8–100000 lux, F2.0, B/W: 0.16 lux, F2.0 AXIS M3026-VE/M3027-PVE: Color: 0.3–200000 lux, F2.0, B/W: 0.06 lux, F2.0	Event actions	File upload: FTP, HTTP, network share and email Notification: email, HTTP and TCP External output activation Video recording to edge storage Pre- and post-alarm video buffering AXIS M3026-VE/M3027-PVE: Go to PTZ preset, Guard tour
Shutter time	AXIS M3024-LVE/M3025-VE: 1/8000 s to 1/6 s AXIS M3026-VE: 1/30500 s to 2 s AXIS M3027-PVE: 1/24000 s to 2 s	Data streaming	Event data
Camera angle adjustment	AXIS M3024-LVE: Pan ±175°, Tilt 65°, Rotation ±180° AXIS M3025-VE/M3026-VE: Pan ±175°, Tilt 70°, Rotation ±180° AXIS M3027-PVE: Rotation ±180°	Built-in installation aids	Pixel counter
Video		General	
Video compression	H.264 Main Profile (MPEG-4 Part 10/AVC), Motion JPEG AXIS M3026-VE/M3027-PVE: Also H.264 Baseline Profile	Casing	IP66- and NEMA 4X-rated, IK10 impact-resistant aluminum casing with transparent, polycarbonate cover and dehumidifying membrane, Encapsulated electronics, Captive screws (resistorx 10) Color: White NCS S 1002-B (for repainting instructions of skin covers, contact your Axis partner)
Resolutions	AXIS M3024-LVE: 1280x800 (1 MP) to 320x240 AXIS M3025-VE: 1920x1080 (2 MP/HDTV 1080p) to 320x240 AXIS M3026-VE: 2048x1536 (3 MP) to 160x120 AXIS M3027-PVE: 2592x1944 (5 MP) to 160x120	Memory	AXIS M3024-LVE/M3025-VE: 256 MB RAM, 128 MB Flash AXIS M3026-VE/M3027-PVE: 512 MB RAM, 128 MB Flash
Frame rate	AXIS M3024-LVE/M3025-VE: 25/30 fps with power line frequency 50/60 Hz AXIS M3026-VE: 3 MP capture mode: 16/20 fps with power line frequency 50/60 Hz HDTV 1080p (1920x1080) and 2 MP (1600x1200) capture modes: 25/30 fps with power line frequency 50/60 Hz AXIS M3027-PVE: 12 fps in 360° overview and panoramic views with power line frequency 50/60 Hz	Power	Power over Ethernet IEEE 802.3af/802.3at Type 1 AXIS M3024-LVE: Class 2, max. 6.3 W AXIS M3025-VE: Class 2, max. 3.2 W AXIS M3026-VE: Class 2, max. 4.5 W AXIS M3027-PVE: Class 2, max. 4.5 W
Video streaming	Multiple, individually configurable streams in H.264 and Motion JPEG, Controllable frame rate and bandwidth VBR/CBR H.264	IR illumination	AXIS M3024-LVE: High-efficiency, long-life 850 nm IR LEDs. Range of reach up to 10 m (33 ft) depending on scene
Multi-view streaming	AXIS M3026-VE: Up to 8 individually cropped out view areas. When streaming 4 view areas and 1 overview in VGA resolution, the frame rate is 16/20 fps per stream with power line frequency 50/60 Hz (3 MP capture mode) AXIS M3027-PVE: 360° overview. Dewarped panorama, double panorama and quad views. Up to 4 individually cropped out and dewarped view areas. When streaming 4 dewarped view areas and one 360° overview in VGA resolution, the frame rate is 10 fps per stream	Connectors	Male RJ45 10BASE-T/100BASE-TX PoE on a 2 m (6.6 ft) network cable, warranty can be maintained even when cable is cut—for more information, contact your Axis partner Terminal block for 1 alarm input and 1 output
Pan/Tilt/Zoom	AXIS M3024-LVE/M3025-VE: Digital PTZ AXIS M3026-VE: Digital PTZ, Preset positions, Guard tour AXIS M3027-PVE: Digital PTZ of view areas, Preset positions, Guard tour. Digital PT of panorama, double panorama and quad views	Edge storage	MicroSD/microSDHC/microSDXC slot supporting memory card up to 64 GB (card not included), Support for recording to dedicated network-attached storage (NAS)
Image settings	Compression, Color, Brightness, Sharpness, Contrast, White balance, Exposure control, Backlight compensation, Wide Dynamic Range – dynamic contrast, Text and image overlay, Mirroring of images, Privacy mask AXIS M3024-LVE/M3025-VE/M3026-VE: Rotation: 0°, 90°, 180°, 270°, including Corridor Format AXIS M3026-VE/M3027-PVE: Exposure zones, Fine tuning of low light behavior AXIS M3027-PVE: Rotation: 0°, 180°	Operating conditions	-30 °C to 50 °C (-22 °F to 122 °F) Humidity 10–100% RH (condensing)
Network		Approvals	EN 55022 Class B, EN 55024, EN 61000-6-1, EN 61000-6-2, FCC Part 15 Subpart B Class B, ICES-003 Class B, VCCI Class B, C-tick AS/NZS CISPR 22 Class B, KCC KN22 Class B, KN24, IEC/EN/UL 60950-22, EN 50581, IEC 60529 IP66, NEMA 250 Type 4X, IEC 62262 IK10 AXIS M3024-LVE: IEC 62471
Security	Password protection, IP address filtering, HTTPS ^b encryption, IEEE 802.1X ^b network access control, Digest authentication, User access log	Weight	AXIS M3024-LVE: 770 g (1.7 lb) AXIS M3025-VE/M3026-VE/M3027-PVE: 740 g (1.6 lb)
		Included accessories	Installation Guide, Installation and Management Software CD, Windows decoder 1-user license, Drill hole template, Resistorx L-key, Terminal block connector
		Video management software	AXIS Camera Companion (included), AXIS Camera Station and video management software from Axis' Application Development Partners (not included). Client side dewarping of AXIS M3027-PVE 360° overview is supported in Axis' video management software and also by some partners. For more information, see www.axis.com/products/video/software
		Warranty	Axis 1-year warranty and AXIS Extended Warranty option, see www.axis.com/warranty

- a. Horizontal angle of view
b. This product includes software developed by the OpenSSL Project for use in the OpenSSL Toolkit (<http://www.openssl.org/>), and cryptographic software written by Eric Young (ey@cryptsoft.com).

More information is available at www.axis.com

Dimensions

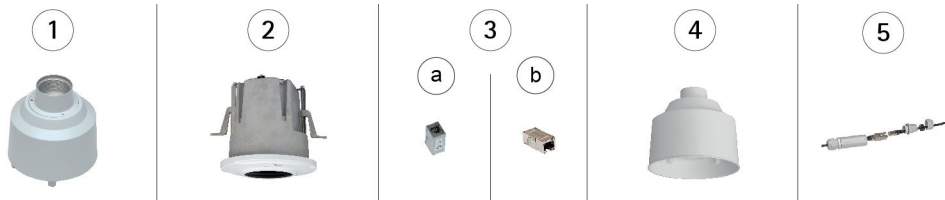
- 1. AXIS M3024-LVE
AXIS M3025-VE
AXIS M3026-VE
- 2. AXIS M3027-PVE



Optional accessories

For indoor use

- 1. AXIS T94F01D Pendant Kit
- 2. AXIS T94F01L Recessed Mount Kit
- 3. Network Cable Coupler Indoor, must be placed in waterproof area
 - a) Standard coupler (included in 1, 2, 7)
 - b) Compact coupler (included in 5, can fit inside 8 if cable is cut)



For outdoor use

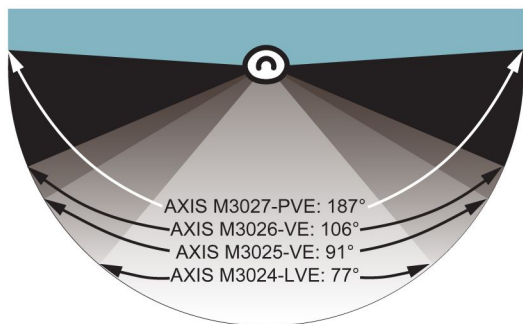
- 4. AXIS T94F02D Pendant Kit with sunshield
- 5. Network Cable Coupler IP66 (can fit inside AXIS T94F02D Pendant Kit)

For indoor or outdoor use

- 6. AXIS T91 Mounting Accessories
- 7. AXIS T94F01M J-Box/Gang Box Plate
- 8. AXIS T94F01P Conduit Back Box
- 9. Skin covers



Comparison of viewing angles



Left: Horizontal angles of view. Right: Approximate fields of view (AXIS M3027-PVE: wall-mount, panoramic view)